



Diana

design
Domitalia

Tavolo / Table
Maxim-160 → P. 92



	Diana	Diana-P
L	56 cm	60 cm
P	57 cm	60 cm
H	83 cm	83 cm
HS	47 cm	47 cm

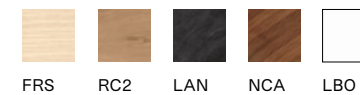


Diana



Diana-P

Struttura / Structure
Legno / Wood



Seduta / Seat
Tessuto / Fabric MIRAGLIO



Tessuto / Fabric BOGOTÀ



Tessuto / Fabric TARANTINO



Tessuto / Fabric LAS VEGAS



Tessuto / Fabric SAKE



Pelle / Leather



Tutti i colori
All colors

Ecopelle / Imitation Leather ALCE

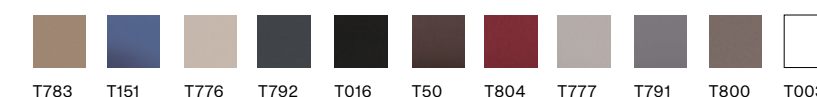


Tutti i colori
All colors

Ecopelle / Imitation Leather NOBUKO



Ecopelle / Imitation Leather TIME



Tutti i colori
All colors

Lana / Wool NORDIC



Tutti i colori
All colors

Ignifugo
Flame-retardant



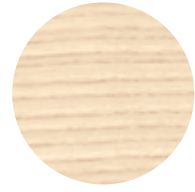
Finiture / Finishes

Legni verniciati - Varnished woods

Piani impiallacciati - Veneered top



LBO
Bianco poro aperto
White open pore
Weiß offen porig
Blanc pore ouvert
Blanco poro abierto



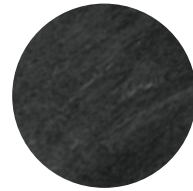
FRS
Frassino sbiancato
White ashwood
Esche gekälkt
Frêne blanchi
Fresno blanco



RC2
Rovere chiaro su frassino
Ashwood tinted light oak
Hell eiche auf Esche
Chêne clair sur frêne
Fresno acabado roble claro



RNS
Rovere nodato spazzolato
Brushed wild oak
Wildeiche gebürstet
Chêne sauvage brosse
Roble cepillado



LAN
Antracite poro aperto
Anthracite open pore
Anthrazit offen porig
Anthracite pore ouvert
Antracita poro abierto

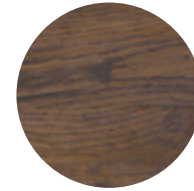


NCA
Noce canaletto su faggio o frassino
Beechwood or ashwood tinted walnut canaletto
Nußbaum canaletto auf Buche oder Esche
Noyer canaletto sur hêtre ou frêne
Haya o fresno acabado nogal canaletto

Piani in legno massello - Solid top



RCI
Rovere chiaro massello invecchiato scortecciato
Solid aged and debarked light oak
Veraltetes und eintrindetes helleiche Massivholz
Chêne clair massif vieilli et ecorcé
Roble claro macizo envejecido y descortezado



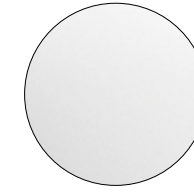
RSI
Rovere scuro massello invecchiato scortecciato
Solid aged and debarked dark oak
Veraltetes und eintrindetes dunkeleiche Massivholz
Chêne foncé massif vieilli et ecorcé
Roble oscuro macizo envejecido y descortezado

Finiture / Finishes

Laminato HPL / Laminato Stratificato - HPL Laminate

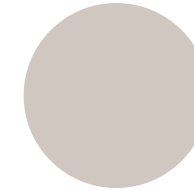


HNO
Laminato nero
Black laminate
Schwarz laminat
Stratifié noir
laminado negro

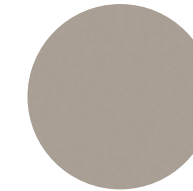


HBI
Laminato bianco
White laminate
Weiss laminat
Stratifié blanc
Laminado blanco

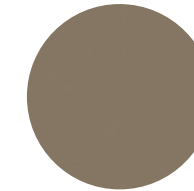
Componenti laccati in MDF - Lacquered MDF components



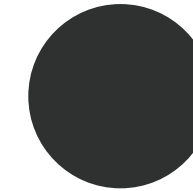
LCO
Corda
Rope
Seil
Corde
Cuerda



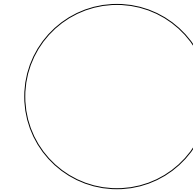
LSA
Sabbia
Sand
Sable
Arena



LTO
Tortora
Taupe
Taubengrau
Taupe
Tórtora



LAN
Antracite
Anthracite
Anthrazit
Anthracite
Gris oscuro



LBO
Bianco
White
Weiß
Blanc
Blanco

Finiture / Finishes

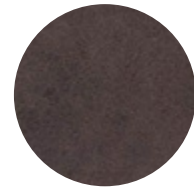
Tessuto / Fabric – Stoff – Tissu – Tejido

Bogotá

Composizione
Composition:
100% PL
Solidità alla luce
Light fastness:
≥ 4
Resistenza all'abrasione
Abrasion resistance:
Martindale
≥ 30.000 cicli / cycles



BO615
Beige
Beige
Beige
Beige
Beige



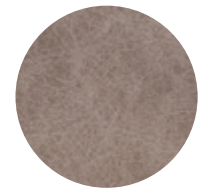
BO622
Fumo
Smoke
Rauch
Fumé
Humo



BO17
Perla
Pearl
Perle
Perle
Perla



BO100
Asfalto
Road
Asphalt
Asphalte
Asfalto



BO130
Tortora
Taupe
Braungrau
Taupe
Gris topo



BO02
Cammello
Camel
Kamel
Chameau
Camel



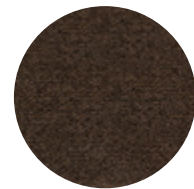
BO205
Ferro
Iron
Eisen
Fer
Hierro

Tarantino

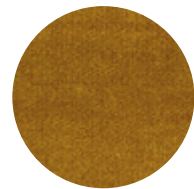
Composizione
Composition:
12% VI - 88% PL
Solidità alla luce
Light fastness:
≥ 4
Resistenza all'abrasione
Abrasion resistance:
Martindale
≥ 100.000 cicli / cycles



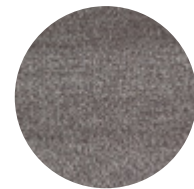
TA20
Sabbia
Sand
Sand
Sable
Arena



TA622
Castano
Chestnut
Kastanien braun
Châtain
Castaño



TA28
Zafferano
Saffron
Safran
Safran
Azafrán



TA17
Cenere
Ash
Asche
Cendre
Ceniza



TA19
Perla
Pearl
Perle
Perle
Perla



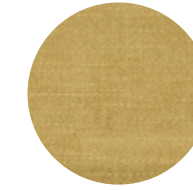
Finiture / Finishes

Tessuto / Fabric – Stoff – Tissu – Tejido

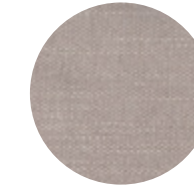
Las Vegas

Composizione
Composition:
12% VI - 88% PL
Solidità alla luce
Light fastness:
≥ 4
Resistenza all'abrasione
Abrasion resistance:
Martindale
≥ 80.000 cicli / cycles

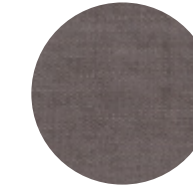
Antimacchia
Stain repellent



LV28
Limone
Lemon
Zitron
Citron
Limòn



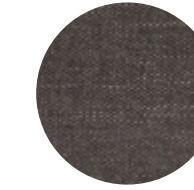
LV616
Oyster
Oyster
Auster
Huitre
Ostra



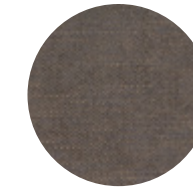
LV622
Talpa
Dark taupe
Dunkles Taupe
Taupe foncé
Marrón oscuro



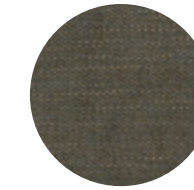
LV20
Lino
Linen
Leinen
Lin
Lino



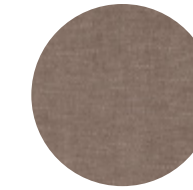
LV100
Cenere
Ash
Asche
Cendre
Ceniza



LV11
Fango
Mud
Schlamm
Boue
Barro



LV204
Bosco
Wood
Holz
Bois
Madera



LV130
Tortora
Taupe
Braungrau
Taupe
Gris topo



Finiture / Finishes

Tessuto / Fabric – Stoff – Tissu – Tejido

Miraglio

Composizione
Composition:
100% PL
Solidità alla luce
Light fastness:
≥ 4
Resistenza all'abrasione
Abrasion resistance:
Martindale
≥ 100.000 cicli / cycles

Idrorepellente
Water-repellent



M104 Crema Cream Crème Crème Crema	M130 Cachi Khaki Khaki Kaki Caqui	M105 Mandarino Tangerine Mandarine Mandarin Mandarina	M24 Oliva Olive Olive Olive Aceituna	M15 Petrolio Petrol Erdoel Pétrole Petróleo

M56 Cadetto Sage green Graugrün Vert sauge Salvia	M17 Carta da zucchero Egg blue Blassblau Carte de sucre Celeste	M19 Pervinca Periwinkle Hellviolett Pervenche Violeta	M23 Rosa Pink Rose Rose Rosa	M615 Salmone Salmon Lachs Saumon Salmón

M80 Terracotta Brick Ziegel rot Brique Ladrillo	M616 Cenere Ash Asche Cendre Ceniza	M205 Fumo Smoke Rauch Fumé Humo	M617 Ardesia Slate Schiefer Ardoise Pizarra	M16 Avio Air force blue Blau-grau Bleu Avio

M18 Carbone Charcoal Kohle Charbon Carbón	M14 Oltremare Deep sea Tiefsee Eau profonde Agua profunda	M90 Amaranto Amaranth Amaranto Amaranto Amaranto	M26 Zafferano Saffron Safran Safran Azafrán	M100 Tronco Trunk Kofferraum Coffre Tronco

Finiture / Finishes

Tessuto / Fabric – Stoff – Tissu – Tejido

M21 Turchese Turquoise Türkis Turquoise Turquesa	M07 Ruggine Rust Rost Rouille Herrumbre	M10 Scarlatta Scarlet Scharlach Écarlate Escarlata	M2100 Bistrot Bistro Bistro Bistrot Bistro	M13 Felce Fern Farn Fougère Helecho

Miraglio-T

Composizione
Composition:
100% PL
Solidità alla luce
Light fastness:
≥ 4
Resistenza all'abrasione
Abrasion resistance:
Martindale
≥ 100.000 cicli / cycles

Idrorepellente
Water-repellent



MT130 Cachi Khaki Khaki Kaki Caqui	MT56 Cadetto Sage green Graugrün Vert saug Salvia	MT19 Pervinca Periwinkle Hellviolett Pervenche Violeta	MT617 Ardesia Slate Schiefer Ardoise Pizarra	MT18 Carbone Charcoal Kohle Charbon Carbón

Miraglio-TM

Composizione
Composition:
100% PL
Solidità alla luce
Light fastness:
≥ 4
Resistenza all'abrasione
Abrasion resistance:
Martindale
≥ 100.000 cicli / cycles

Idrorepellente
Water-repellent



MTM104 Crema Cream Crème Crème Crema	MTM130 Cachi Khaki Khaki Kaki Caqui	MTM56 Cadetto Sage green Graugrün Vert saug Salvia	MTM23 Rosa Pink Rose Rose Rosa	MTM80 Terracotta Brick Ziegel rot Brique Ladrillo

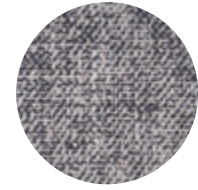
MTM205 Fumo Smoke Rauch Fumé Hu	MTM617 Ardesia Slate Schiefer Ardoise Pizarra

Finiture / Finishes

Tessuto / Fabric – Stoff – Tissu – Tejido

Sake

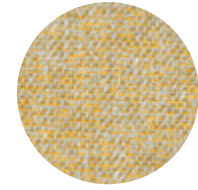
Composizione
Composition:
34% CO, 32% VI, 13% AC,
14% LI, 7% PL
Solidità alla luce
Light fastness:
≥ 4/5
Resistenza all'abrasione
Abrasion resistance:
Martindale
≥ 20.000 cicli / cycles
Resistenza al pilling
Pilling:
4



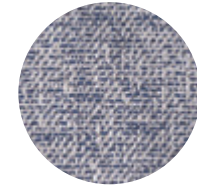
SK01
Cenere
Ash
Asche
Cendre
Ceniza



SK02
Tortora
Taupe
Braungrau
Taupe
Gris topo



SK03
Ocra
Ochre
Ocker
Ocre
Ocre



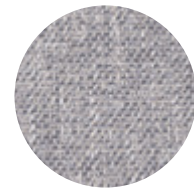
SK06
Notte
Night
Nacht
Nuit
Noche



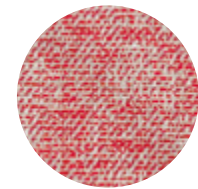
SK10
Ghiaccio
Ice
Eis
Glace
Hielo



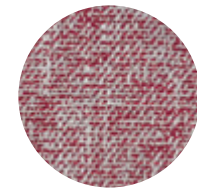
SK12
Corda
Rope
Seil
Corde
Cuerda



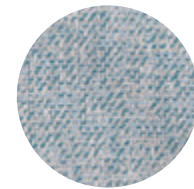
SK13
Grigio
Grey
Grau
Gris
Gris



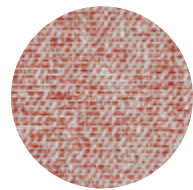
SK20
Ciclamino
Cyclamen
Zyklamen
Cyclamen
Ciclamen



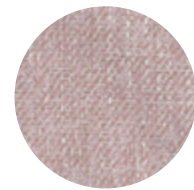
SK25
Bordeaux
Bordeaux
Bordeaux
Bordeaux
Burdeos



SK42
Acquamarina
Aquamarine
Aquamarin
Agu-marine
Aguamarina



SK45
Ruggine
Rust
Rost
Rouille
Herrumbre



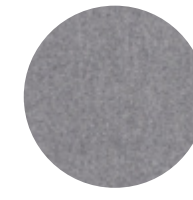
SK46
Rosa
Pink
Rose
Rose
Rosa

Finiture / Finishes

Lana / Wool – Wolle – Laine – Lana

Nordic

Composizione
Composition:
70% WO, 25% PA, 5% AF
Solidità alla luce
Light fastness:
5
Resistenza all'abrasione
Abrasion resistance:
Martindale
≥ 100.000 cicli / cycles



NC1000
Grigio
Grey
Grau
Gris
Gris



NC1002
Carbone
Charcoal
Kohle
Charbon
Carbón



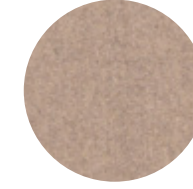
NC1037
Beige
Beige
Beige
Beige
Beige



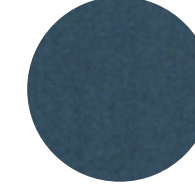
NC1042
Acciaio
Steel
Stehlen
Acier
Acero



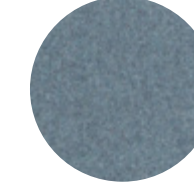
NC2017
Castano
Chestnut
Kastanien braun
Chatain
Castaño



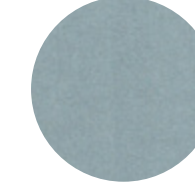
NC2151
Sabbia
Sand
Sand
Sable
Arena



NC2279
Petrolio
Petrol
Erdoel
Pétrole
Petróleo



NC2288
Azzurro
Light blue
Blau
Bleu
Azul



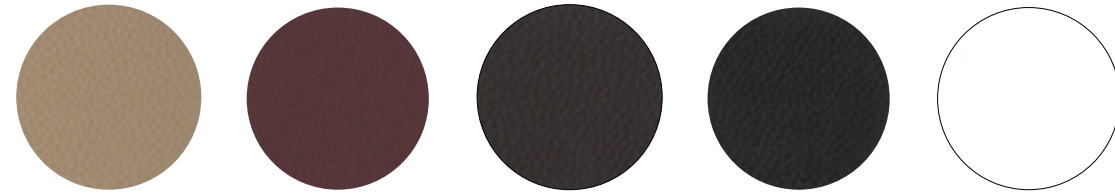
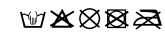
NC9860
Turchese
Turquoise
Türkis
Turquoise
Turquesa

Finiture / Finishes

Pelle / Leather – Leder – Cuir – Piel

Pelle – Leather – Leder – Cuir – Piel

Composizione
Composition:
100% Pelle naturale
Leather
Solidità alla luce
Light fastness:
8
Solidità alla flessione ripetuta /
Repeated flexural strength:
Martindale
≥ 50.000 cicli / cycles



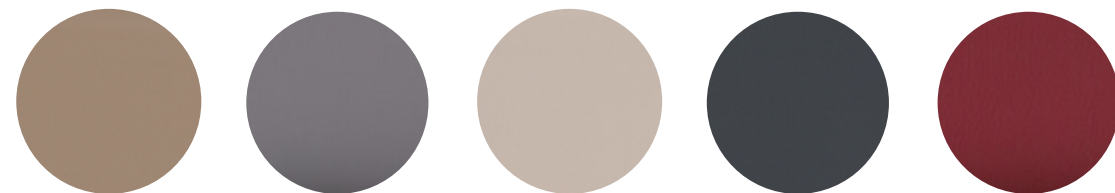
- | | | | | |
|---|--|--|--|---|
| PS
Sabbia
Sand
Sand
Sable
Arena | PC
Caffè
Coffee
Kaffee
Café
Café | PTM
Testa di moro
Dark brown
Dunkelbraun
Marron
Marrón | PN
Nero
Black
Schwarz
Noir
Negro | PB
Bianco
White
Weiß
Blanc
Blanco |
|---|--|--|--|---|

Time

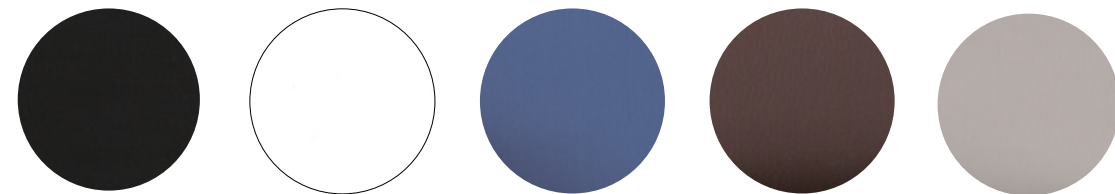
Composizione
Composition:
10% CO - 20% PES -
70% PVC
Solidità alla luce
Light fastness:
4/5
Resistenza all'abrasione
Abrasion resistance:
Martindale
≥ 102.400 secco/dry
cicli / cycles
≥ 51.200 umido/wet
cicli / cycles
Cl. 1IM - IMO -
BS7176/EN1021
PARTS 1&2
1994 - BS 5852
(CRIB 5) -
TB117:2013



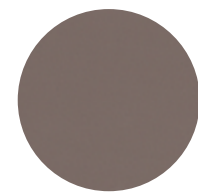
Ecopelle – Imitation leather – Kunstleder – Similicuir – Imitación piel



- | | | | | |
|---|---|---|---|---|
| T783
Sabbia
Sand
Sand
Sable
Arena | T791
Grigio
Grey
Grau
Gris
Gris | T776
Tortora
Taupe
Taubengrau
Taupe
Tórtora | T792
Piombo
Lead
Blei
Plomb
Plomo | T804
Bordeaux
Bordeaux
Bordeaux
Bordeaux
Bordeaux |
|---|---|---|---|---|



- | | | | | |
|--|---|---|--|--|
| T016
Nero
Black
Schwarz
Noir
Negro | T003
Bianco
White
Weiß
Blanc
Blanco | T151
Avio
Air force blue
Avio
Bleu pétrole
Avio | T50
Cioccolato
Chocolate
Schokolade
Chocolat
Chocolate | T777
Perla
Pearl
Perle
Perle
Perla |
|--|---|---|--|--|



- T800**
Fango
Mud
Schlammfarbe
Boue
Barro

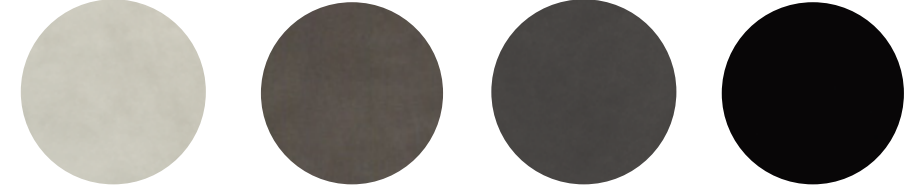
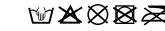
Finiture / Finishes

Ecopelle

Imitation leather – Kunstleder – Similicuir – Imitación piel

Nobuko

Composizione
Composition:
88% PU, 12% AF
Solidità alla luce
Light fastness:
5
Resistenza all'abrasione
Abrasion resistance:
Martindale
≥ 100.000 cicli / cycles



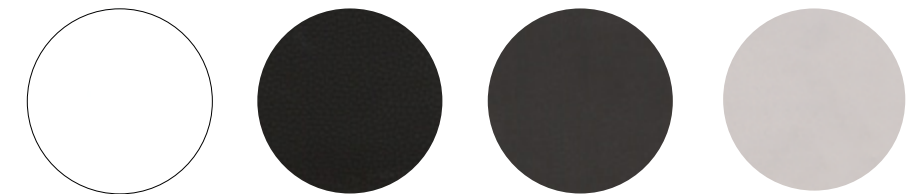
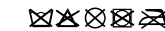
- | | | | |
|--|--|--|--|
| N3
Crema
Cream
Crème
Crème
Crema | N756
Fango
Mud
Schlammfarbe
Boue
Barro | N516
Carbone
Charcoal
Kohle
Charbon
Carbón | N780
Nero
Black
Schwarz
Noir
Negro |
|--|--|--|--|



- | | | |
|--|---|---|
| N483
Beige
Beige
Beige
Beige
Beige | N603
Cannella
Cinnamon
Zimt
Cannelle
Canela | N06
Macchiato
Macchiato
Macchiato
Macchiato
Macchiato |
|--|---|---|

Alce

Composizione
Composition:
30% CO, 2% PU, 68% PVC
Solidità alla luce
Light fastness:
7
Resistenza all'abrasione
Abrasion resistance:
Martindale
≥ 102.400 cicli / cycles
UNI 9175/FA1 (1IM) - IMO - FTP BS 7176/EN1021
PARTS 1 & 2 1994 CALIFORNIA 117, SECTION E
Ignifugicità
Flame-retardant



- | | | | |
|---|--|---|---|
| A001
Bianco
White
Weiß
Blanc
Blanco | A016
Nero
Black
Schwarz
Noir
Negro | A140
Moka
Moka
Moka
Moka
Moka | A175
Cappuccino
Cappuccino
Cappuccino
Cappuccino
Cappuccino |
|---|--|---|---|



- | | | | | |
|--|---|---|--|--|
| A240
Fango
Mud
Schlammfarbe
Boue
Barro | A450
Cammello
Camel
Kamel
Chameau
Camel | A750
Tortora
Taupe
Taubengrau
Taupe
Tórtora | A850
Antracite
Anthracite
Anthrazit
Anthracite
Gris oscuro | A950
Noce
Walnut
Nussbaum
Noyer
Nuez |
|--|---|---|--|--|